



FEMA

www.fema.gov

Debris removal guidelines

In efforts to expedite the debris removal process, please follow these rules

Placing debris **near or on trees, poles or other structures** makes removal difficult. This includes fire hydrants and meters.

Debris separation

Please separate debris into the **six categories**, shown below.

Electronics

Television, computer, stereo, phone, DVD player

Large Appliances

Refrigerator, washer/dryer, air conditioner, stove, water heater, dishwasher

Do not leave doors **unsealed or unsecured**

Hazardous waste

Oil, battery, pesticide, paint, cleaning supplies, compressed gas

Vegetative debris

Tree branches, leaves, logs, plants

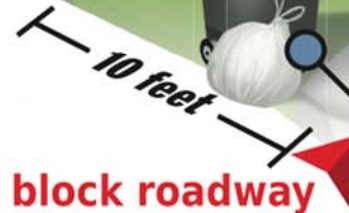
Construction debris

Building materials, drywall, lumber, carpet, furniture, plumbing

Household garbage

Bagged garbage, discarded food, paper, packaging.

Debris should be placed curbside



Debris should not **block roadway**



US Army Corps of Engineers®

www.usace.army.mil